

# SOUTH KENT COAST CCG

## Analysis of Deprived Areas

In the most deprived decile for Kent

January 2016



KCC Public Health is taking a new approach to reducing health inequalities in the county, by producing focussed analysis of LSOAs in the most deprived decile. Multivariate segmentation techniques have been used to identify different 'types' of deprivation in Kent. This report shows our analysis of the most deprived areas in the South Kent Coast CCG Area. For more information on the rationale of this approach and our methods, please see the full report.

---

### Produced by

Dr Wikum Jayatunga: Public Health Registrar ([wikum.jayatunga@kent.gov.uk](mailto:wikum.jayatunga@kent.gov.uk))

Rachel Kennard: Senior Intelligence Analyst ([rachel.kennard@kent.gov.uk](mailto:rachel.kennard@kent.gov.uk))

Natasha Hobbs: Public Health Information Officer ([natasha.hobbs@kent.gov.uk](mailto:natasha.hobbs@kent.gov.uk))

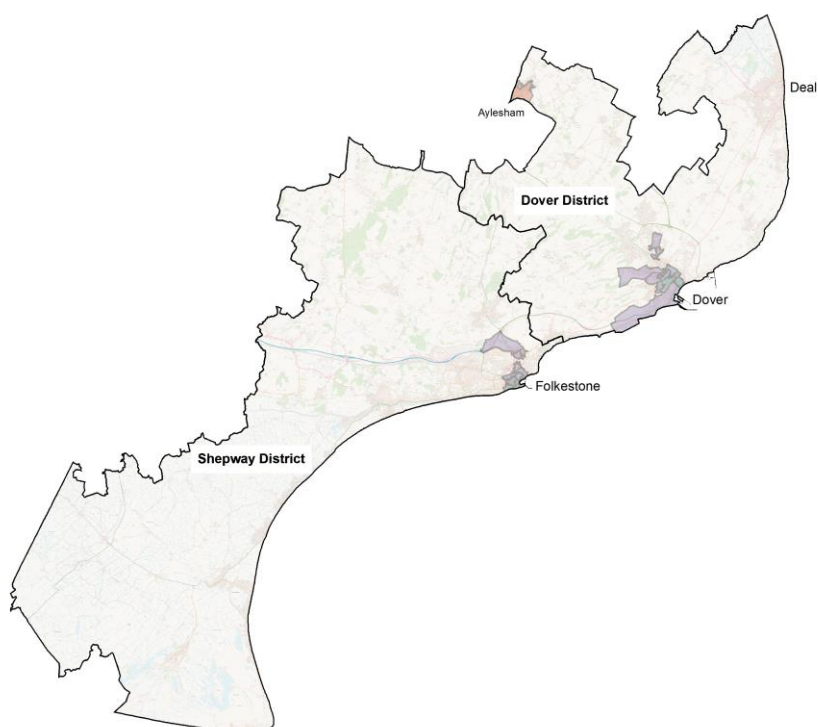
Correspondence to: Rachel Kennard

## Background

South Kent Coast CCG covers the areas of Shepway and Dover, which include the main towns of Folkestone and Dover respectively. Deprivation statistics are higher than the Kent average and the England average, with generally worse health outcomes. The towns have an important location on the South Coast of England, with major transport routes between mainland Europe and London. 19 LSOAs feature in the most deprived decile for deprivation in Kent, 8 in Shepway (around Folkestone) and 11 in Dover (around Dover town). There is another pocket of deprivation in the village of Aylesham.

## Deprived Areas

Ward Code	Ward Name	LSOA Code	LSOA name	LSOA rank	GP practice codes serving LSOA				Type	
E05004943	Aylesham	<b>E01024192</b>	<b>Dover 006C</b>	<b>88</b>	G82211				2	
E05004944	Buckland	<b>E01024196</b>	<b>Dover 011D</b>	<b>48</b>	G82015	G82117	G82002	G82128	3	
		<b>E01024193</b>	<b>Dover 011A</b>	<b>72</b>	G82015	G82002	G82128	G82117	3	
E05004946	Castle	<b>E01033211</b>	<b>Dover 012F</b>	<b>32</b>	G82015	G82662	G82002		4	
E05004951	Maxton, Elms Vale and Priory	<b>E01024215</b>	<b>Dover 013B</b>	<b>37</b>	G82729	G82015	G82662	G82128	4	
		<b>E01024214</b>	<b>Dover 013A</b>	<b>70</b>	G82729	G82015			1	
E05004958	St Radigunds	<b>E01024240</b>	<b>Dover 011F</b>	<b>24</b>	G82015	G82128	G82117	G82002	3	
		<b>E01024247</b>	<b>Dover 012D</b>	<b>58</b>	G82662	G82015	G82002	G82117	G82128	1
		<b>E01024246</b>	<b>Dover 013D</b>	<b>71</b>	G82117	G82128	G82015	G82002		1
E05004960	Tower Hamlets	<b>E01024248</b>	<b>Dover 011H</b>	<b>81</b>	G82015	G82128	G82117	G82002	3	
		<b>E01024249</b>	<b>Dover 013E</b>	<b>74</b>	G82015	G82002	G82128		3	
E05005037	Folkestone East	<b>E01024498</b>	<b>Shepway 003C</b>	<b>26</b>	G82086				3	
		<b>E01024496</b>	<b>Shepway 003A</b>	<b>83</b>	G82086	G82091	G82232	G82187	3	
E05005038	Folkestone Foord	<b>E01024500</b>	<b>Shepway 004B</b>	<b>86</b>	G82086				3	
E05005039	Folkestone Harbour	<b>E01024504</b>	<b>Shepway 014A</b>	<b>12</b>	G82091	G82187			1	
		<b>E01024505</b>	<b>Shepway 004E</b>	<b>68</b>	G82187	G82091	G82086		1	
E05005040	Folkestone Harvey Central	<b>E01024507</b>	<b>Shepway 014B</b>	<b>23</b>	G82091	G82232			1	
		<b>E01033215</b>	<b>Shepway 014D</b>	<b>49</b>	G82232	G82091			4	
		<b>E01033212</b>	<b>Shepway 014C</b>	<b>53</b>	<b>G82091</b>	<b>G82232</b>			<b>4</b>	



Young people lacking opportunities

# South Kent Coast CCG Type 1 Deprived LSOAs

## Folkestone Harbour, Clarendon, Tower Hamlets

### MAIN ISSUES

#### Characteristics

- Young adults in private rented accommodation
- Particularly high levels of shared dwellings and overcrowding
- Particularly poor living environment with high crime rates
- Low incomes
- High levels of out-of-work benefit claimants
- Poor scores for education
- Particularly high levels of movement/transiency

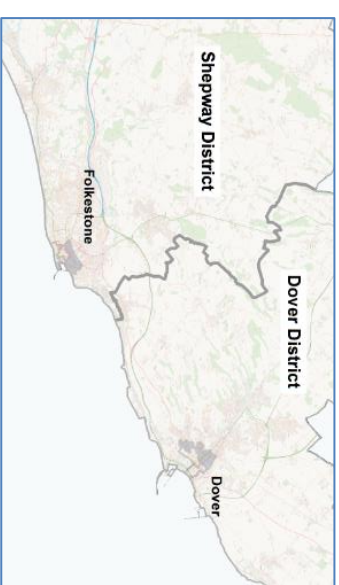
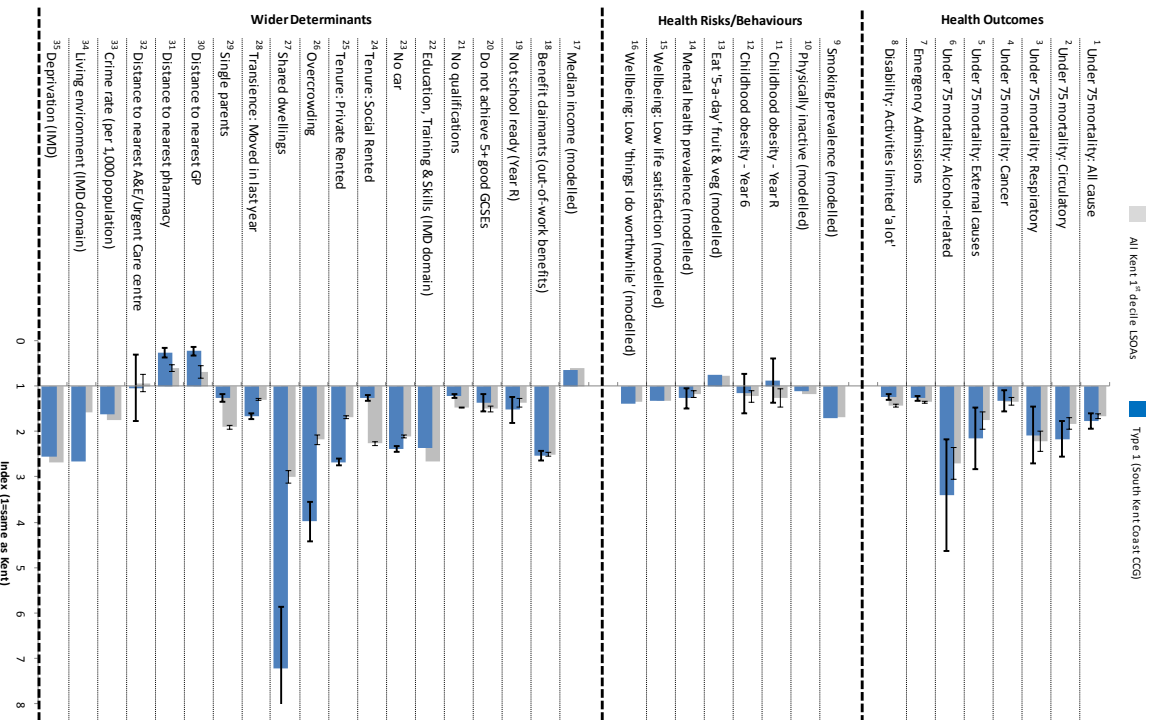
#### Health Risks/Behaviours

- High smoking prevalence
- Low levels of wellbeing

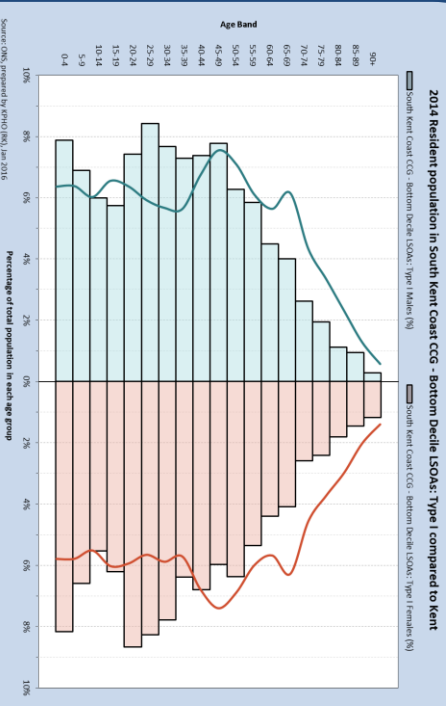
#### Health Outcomes

- High premature mortality rates
- Alcohol-related premature mortality and from 'external causes' particularly high

3



### POPULATION DISTRIBUTION



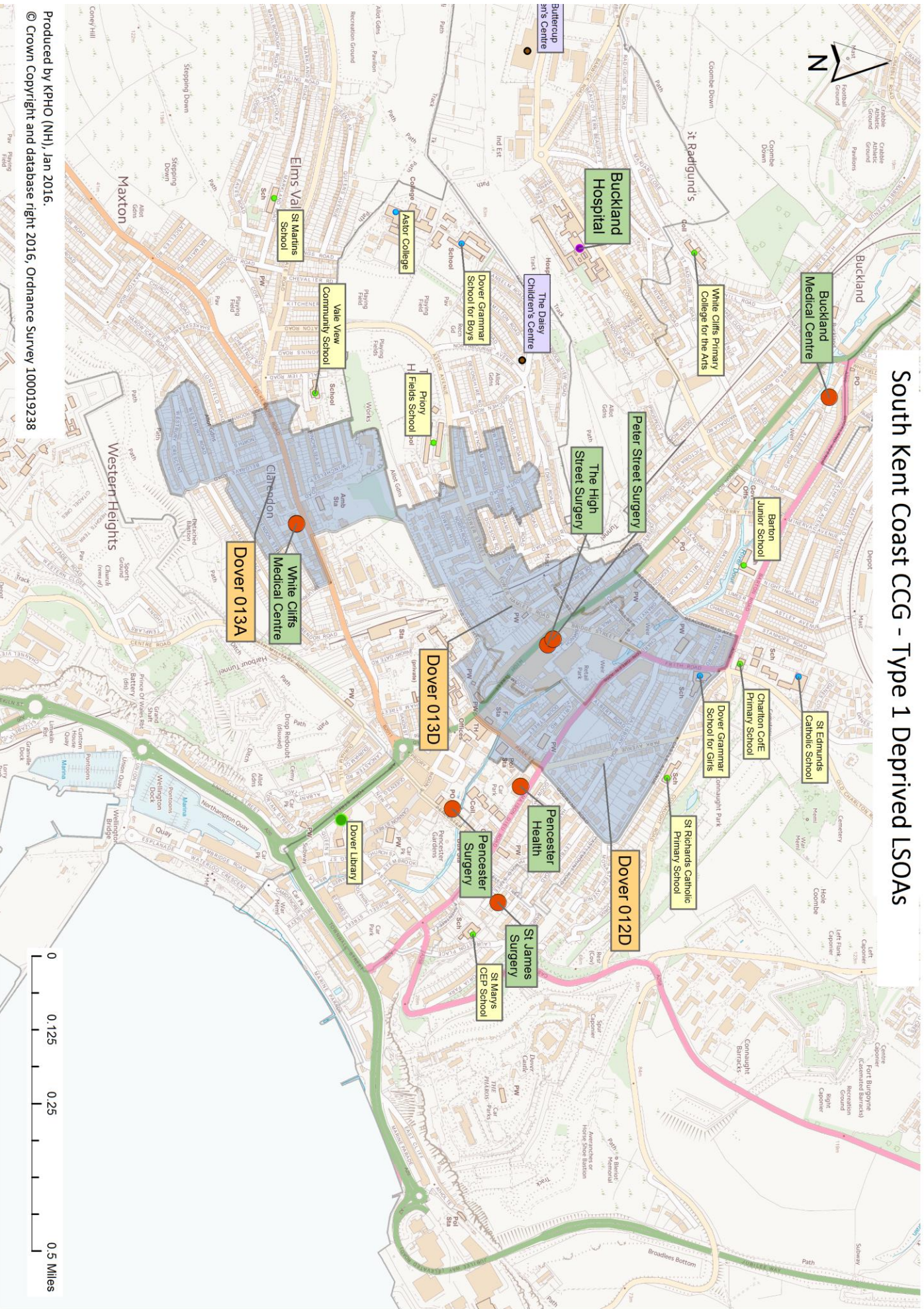
- High numbers of young adults and young children

### KEY FOCUS AREAS:

Education and employment opportunities for young people

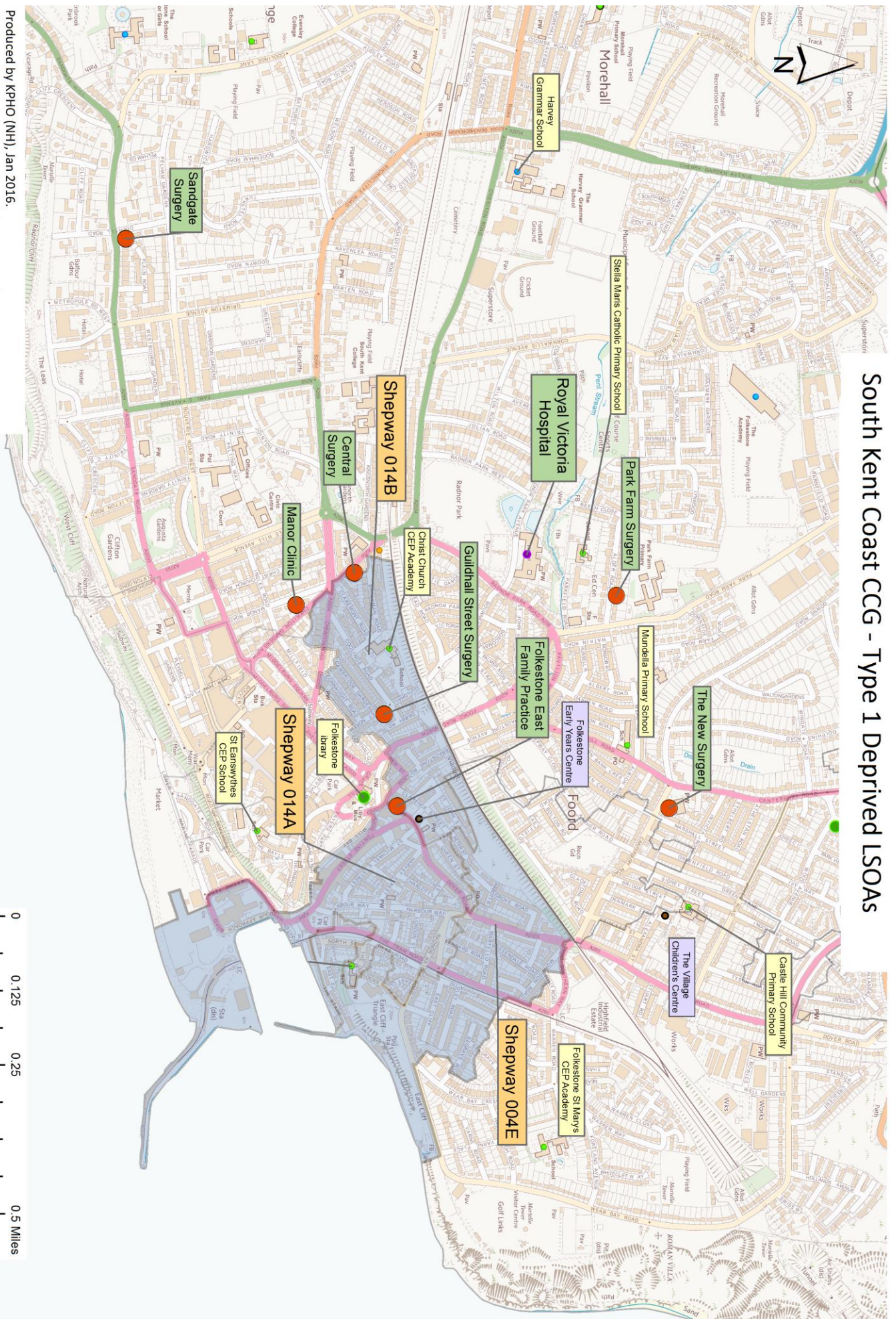


# South Kent Coast CCG - Type 1 Deprived LSOAs





# South Kent Coast CCG - Type 1 Deprived LSOAs





## Deprived rural households

# South Kent Coast CCG Type 2 Deprived LSOAs Aylesham

### MAIN ISSUES

\*Please note that this analysis is based on a *single LSOA*, meaning wide confidence intervals for some measures.

#### Characteristics

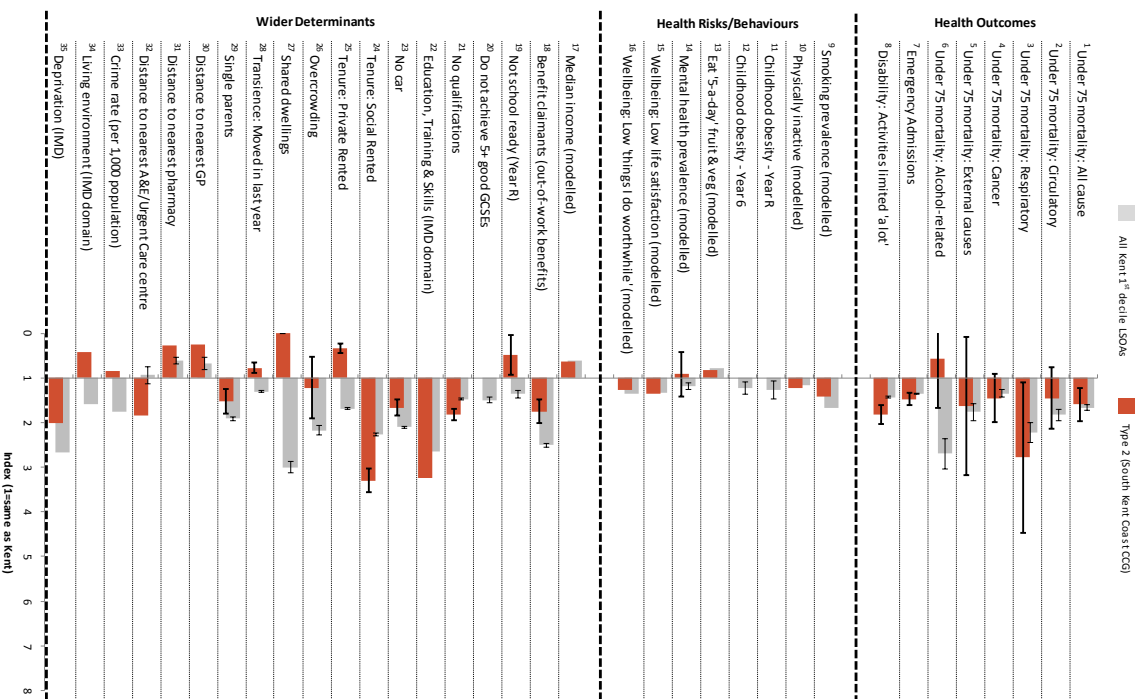
- Low educational attainment and lack of qualifications
- Fewer out-of-work benefit claimants than other deprived groups
- Car ownership is higher than for other deprivation types
- Better living environment and lower crime rates than many other deprived areas
- Low levels of movement/transiency

#### Health Risks/Behaviours

- Fairly high smoking prevalence
- Low levels of wellbeing

#### Health Outcomes

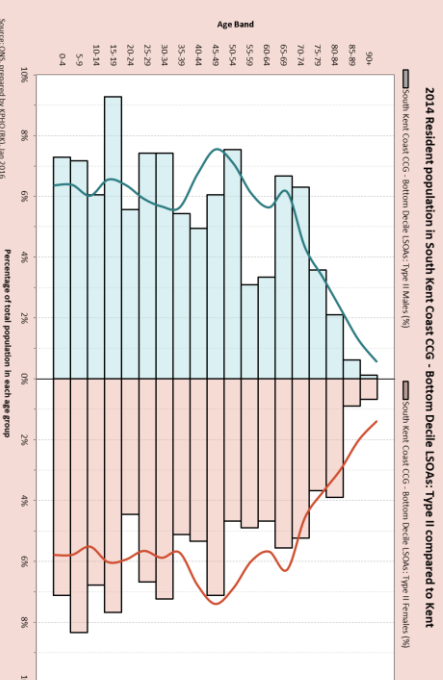
- Particularly high rates of disability ('activities limited a lot')
- High premature mortality



Prepared by KPMG (RKL), Jan 2016



### POPULATION DISTRIBUTION

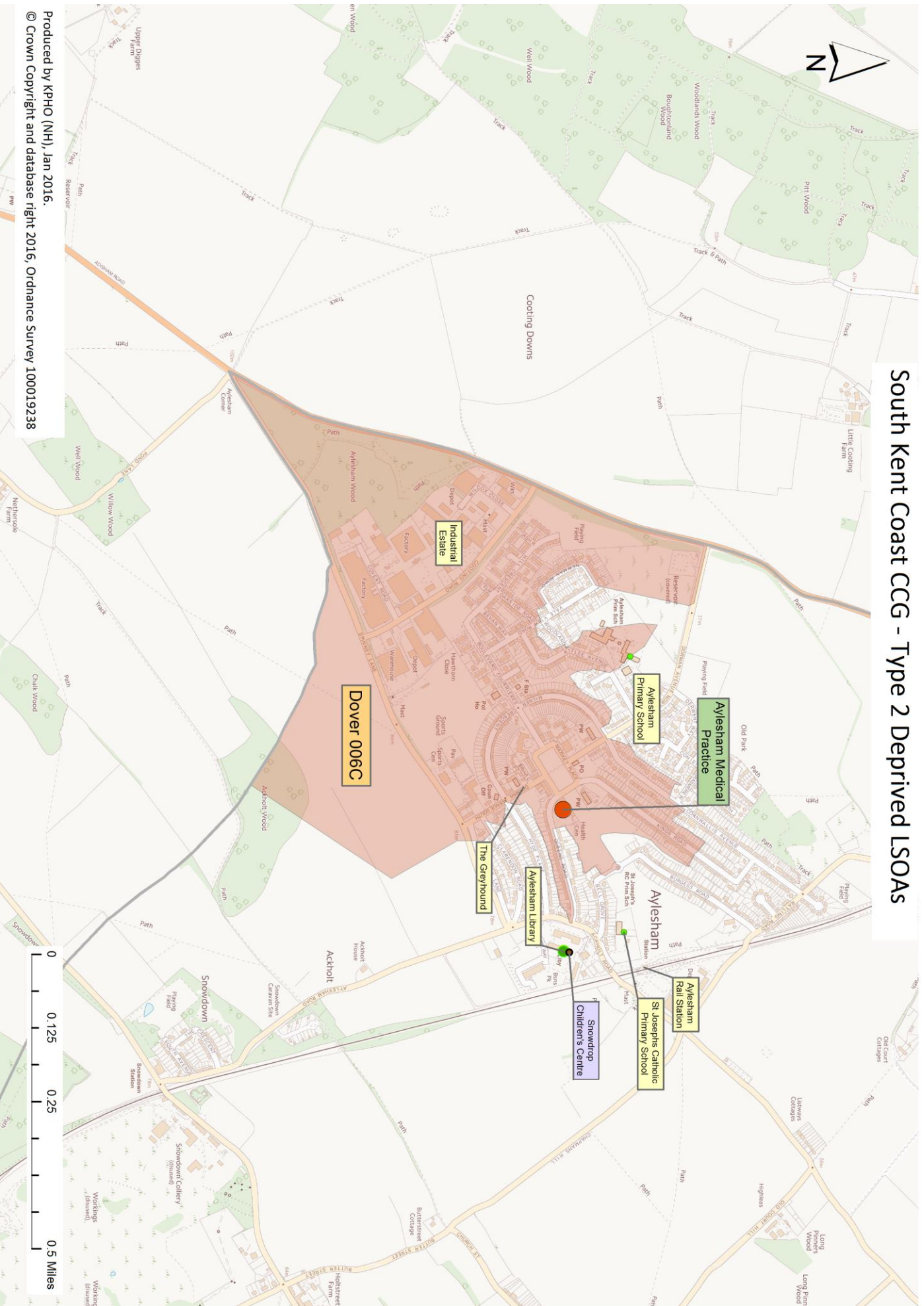


- Low population size makes comment on the population pyramid difficult

### KEY FOCUS AREAS:

#### Education and qualifications

# South Kent Coast CCG - Type 2 Deprived LSOAs



## Families in social housing

### MAIN ISSUES

#### Characteristics

- Families with children in social housing
- Low incomes
- Poor scores for education
- High number of single parents
- Better living environment and lower crime rates than other deprived areas

#### Health Risks/Behaviours

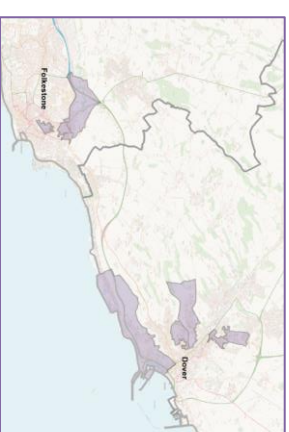
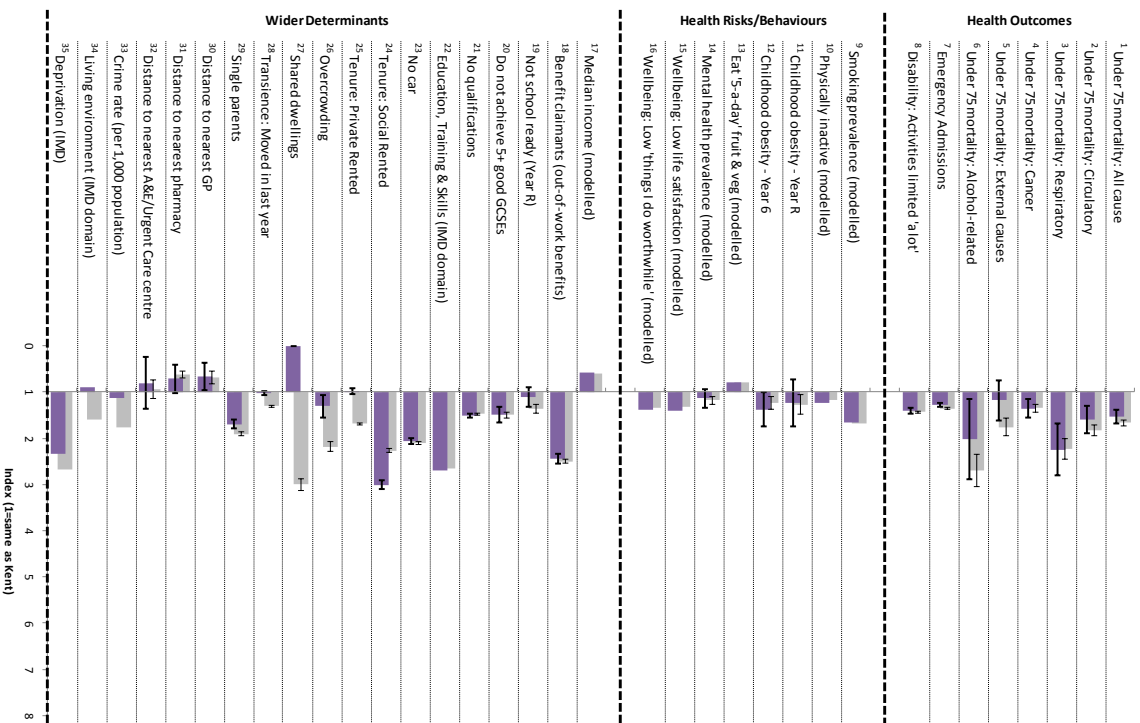
- High smoking prevalence
- Low levels of wellbeing

#### Health Outcomes

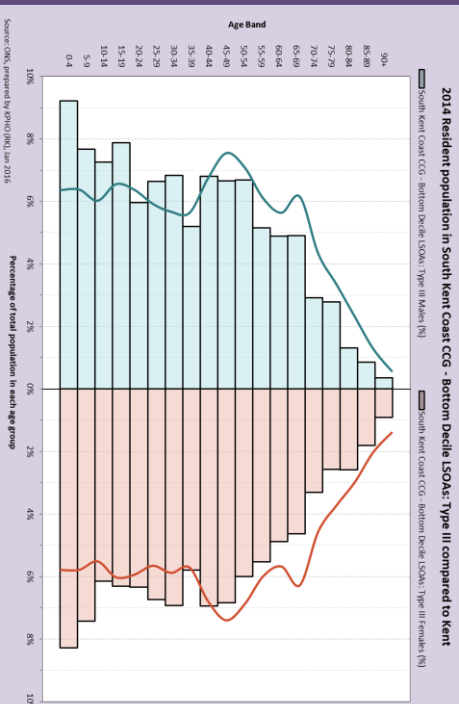
- High premature mortality rates
- High emergency hospital admission rates
- High rates of disability ('activities limited a lot')

# South Kent Coast CCG Type 3 Deprived LSOAs Folkestone East, Aycliffe, Buckland Valley, St Radigans

■ All Kent, 1<sup>st</sup> Decile LSOAs  
■ Type 3 (South Kent Coast CCG)



### POPULATION DISTRIBUTION



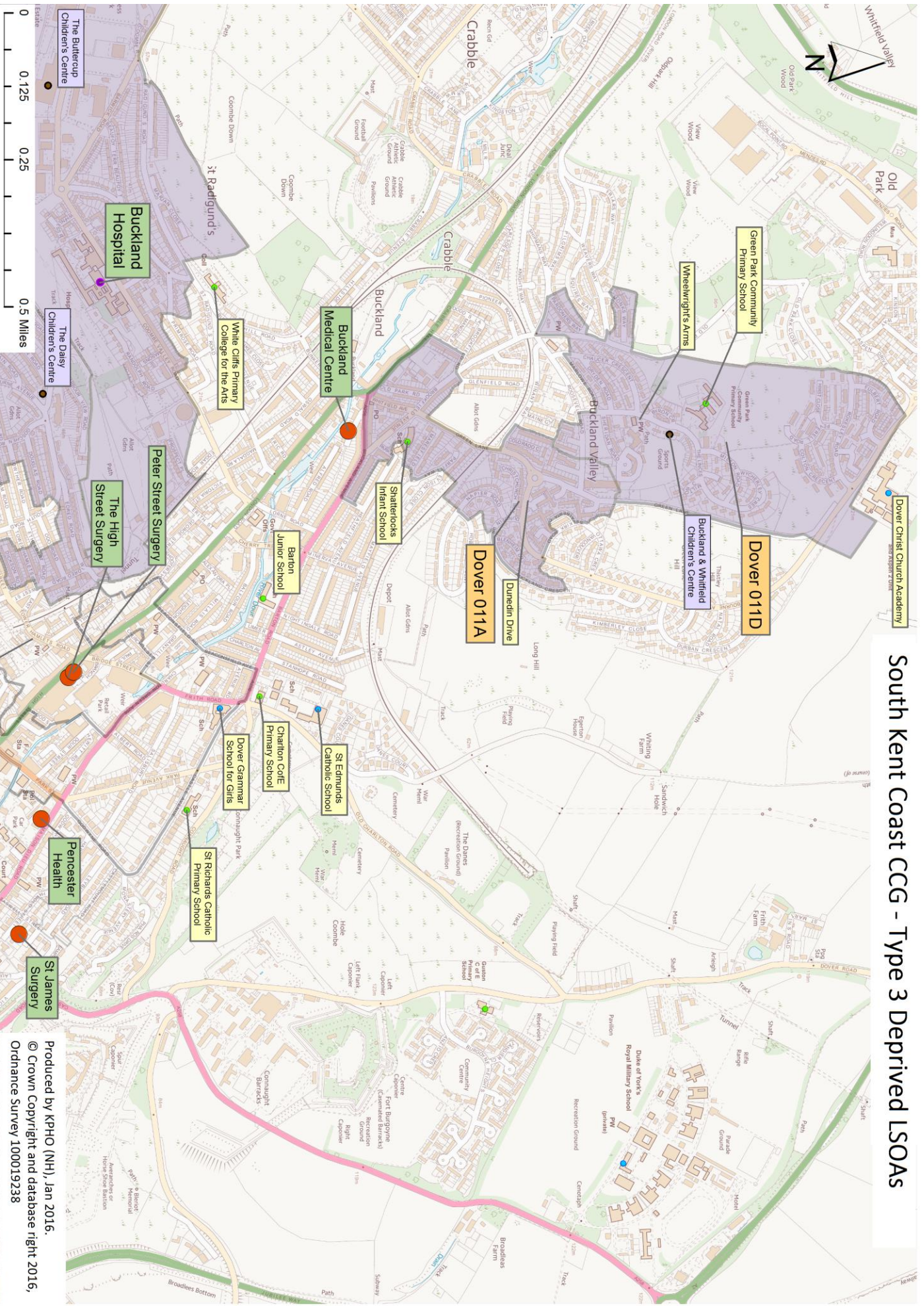
- High numbers of children
- Slightly higher numbers of young adults
- Slightly lower numbers of over 50s

### KEY FOCUS AREAS:

Training, qualifications and employment for parents  
child health and education

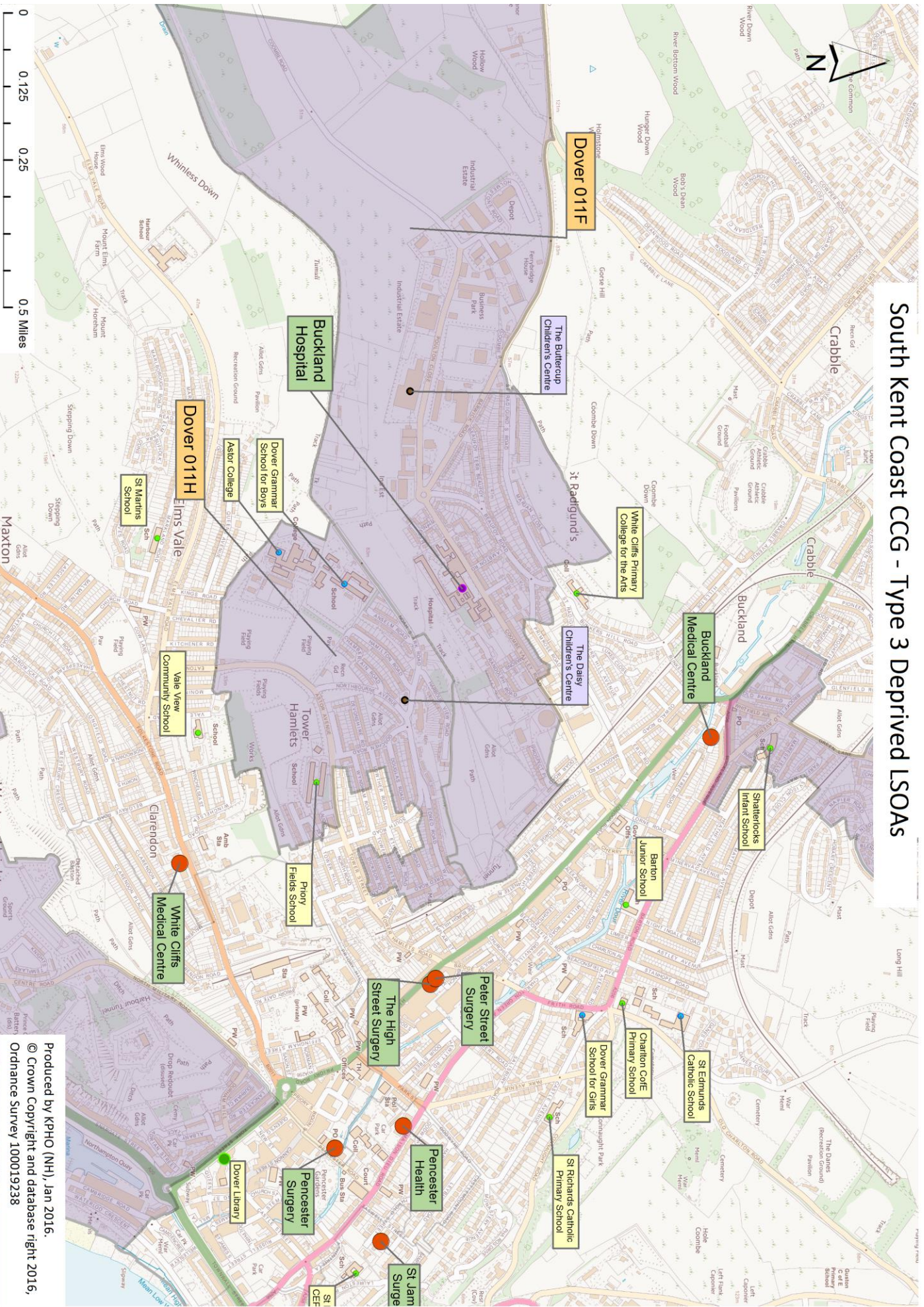


# South Kent Coast CCG - Type 3 Deprived LSOAs



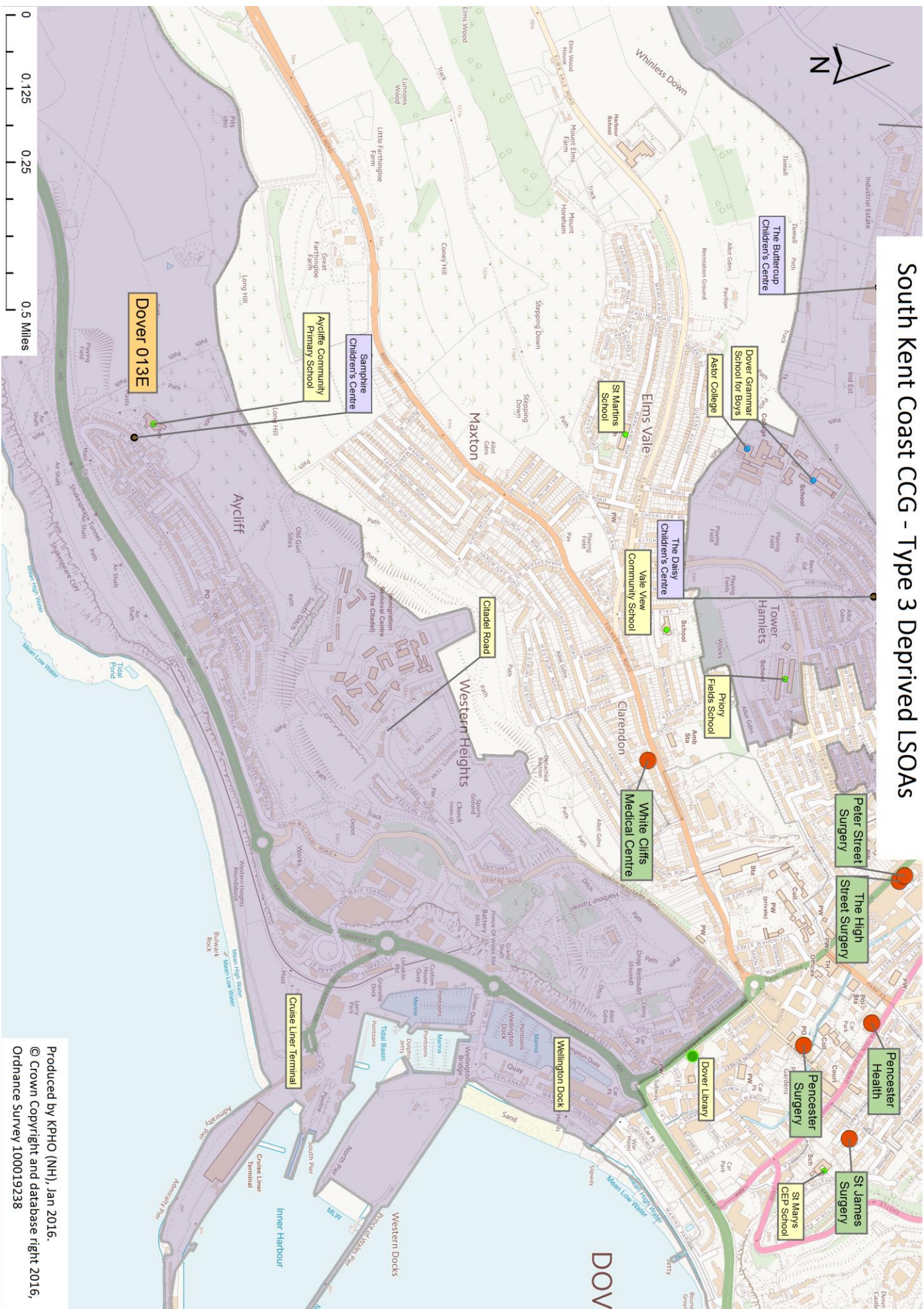


# South Kent Coast CCG - Type 3 Deprived LSOAs





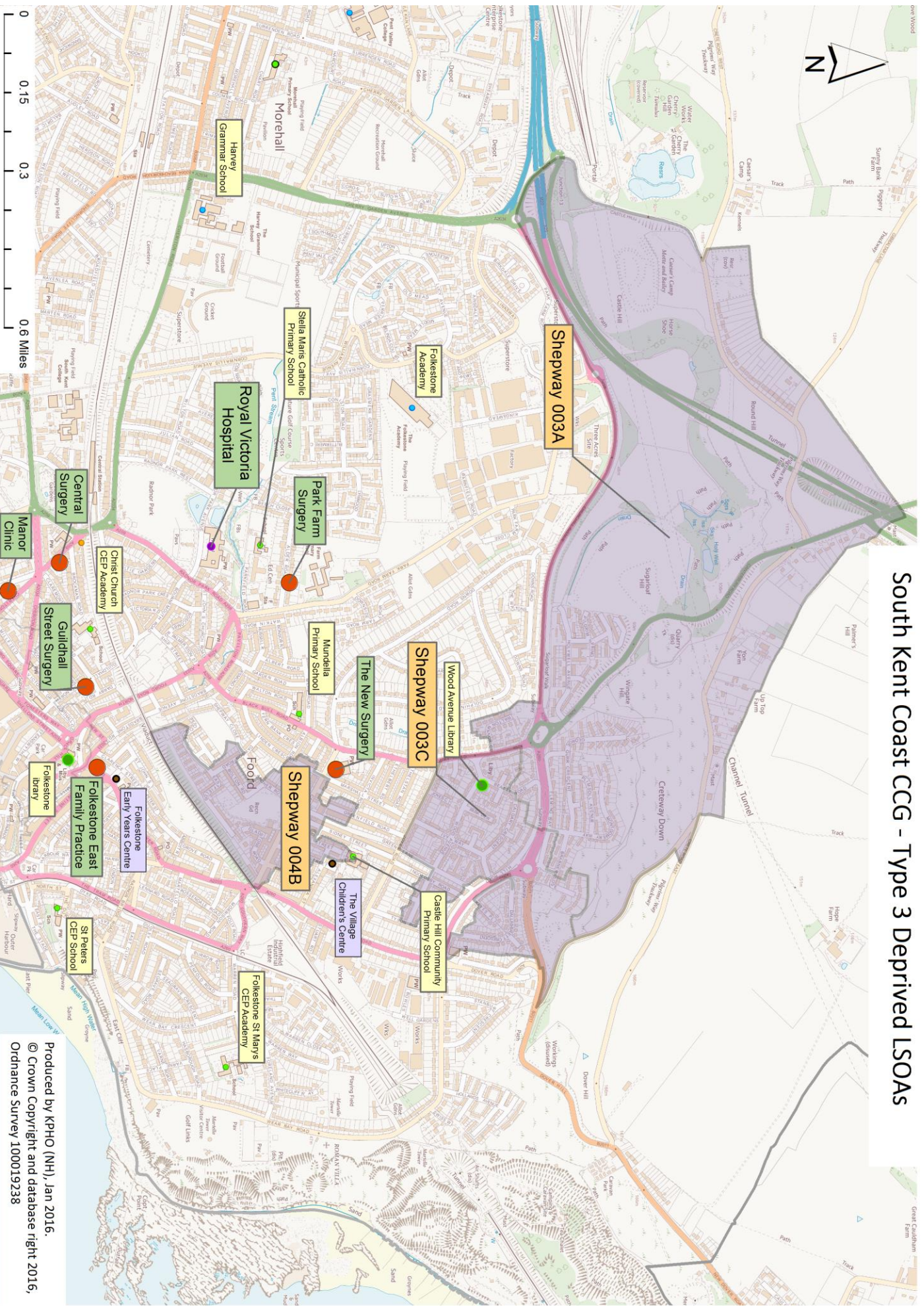
# South Kent Coast CCG - Type 3 Deprived LSOAs



Produced by KPHO (NH), Jan 2016.  
 © Crown Copyright and database right 2016,  
 Ordnance Survey 100019238



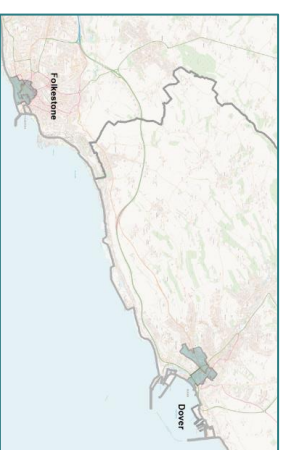
# South Kent Coast CCG - Type 3 Deprived LSOAs





## Young people in poor quality accommodation

# South Kent Coast CCG Type 4 Deprived LSOAs Folkstone Harvey Central, Priory, Pencester



### MAIN ISSUES

#### Characteristics

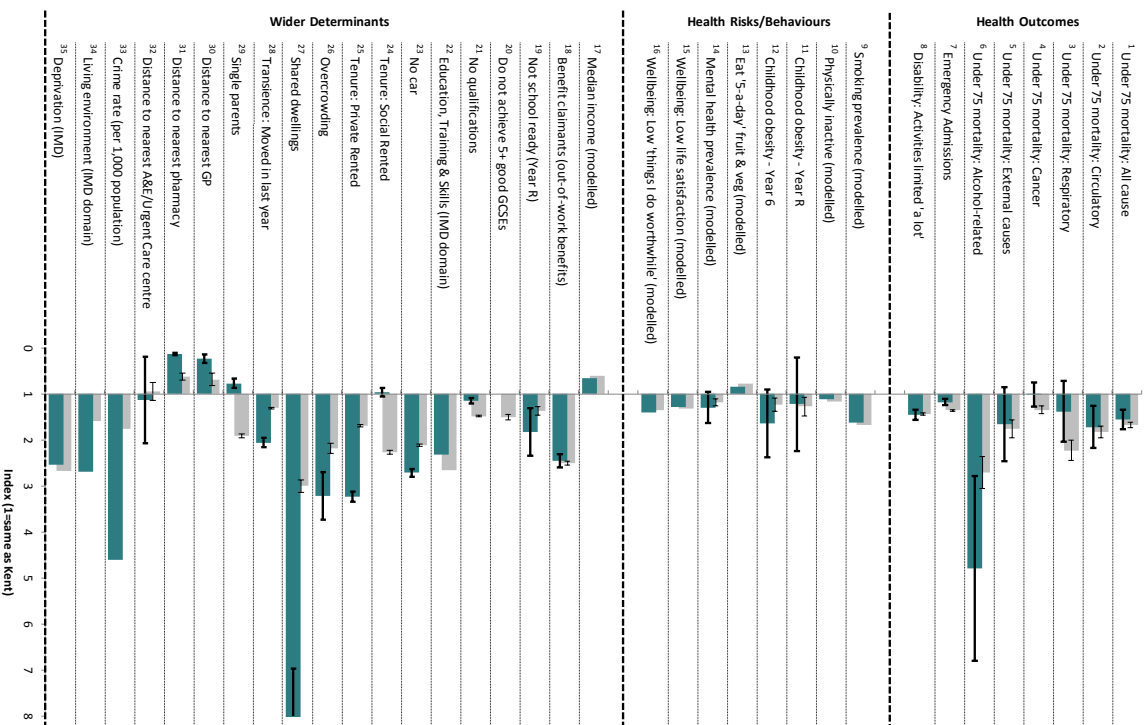
- Young adults in private rented accommodation
- Particularly high levels of shared dwellings and overcrowding
- Better educated than other deprived types
- Particularly poor living environment with particularly high crime rates
- High levels of out-of-work benefit claimants
- Particularly high levels of movement/transiency

#### Health Risks/Behaviours

- High smoking prevalence
- Low levels of wellbeing

#### Health Outcomes

- High premature mortality rates
- High rates of disability ('activities limited a lot')



#### Health Outcomes

- Under 75 mortality: All cause
- Under 75 mortality: Circulatory
- Under 75 mortality: Respiratory
- Under 75 mortality: Cancer
- Under 75 mortality: External causes
- Under 75 mortality: Alcohol-related
- Emergency Admissions
- Disability: Activities limited 'a lot'

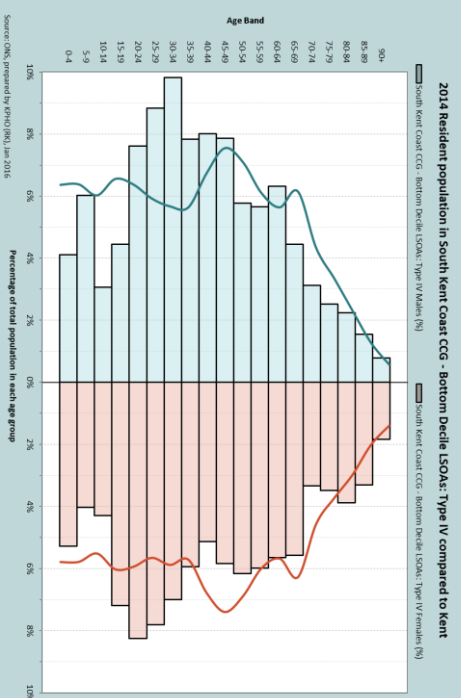
#### Health Risks/Behaviours

- Smoking prevalence (modelled)
- Physically inactive (modelled)
- Childhood obesity - Year R
- Childhood obesity - Year 6
- Eat '5-a-day' fruit & veg (modelled)
- Mental health prevalence (modelled)
- Wellbeing: Low life satisfaction (modelled)
- Wellbeing: Low 'things I do worthwhile' (modelled)
- Median income (modelled)
- Benefit claimants (out-of-work benefits)
- Not school ready (Year R)
- Do not achieve 5+ good GCSEs
- No qualifications
- Education, Training & Skills (IMD domain)
- No car
- Tenure: Social Rented
- Tenure: Private Rented
- Overcrowding
- Shared dwellings
- Transience: Moved in last year
- Single parents
- Distance to nearest GP
- Distance to nearest pharmacy
- Distance to nearest A&E/Urgent Care centre
- Crime rate (per 1,000 population)
- Living environment (IMD domain)
- Deprivation (IMD)

#### Wider Determinants

- Median income (modelled)
- Benefit claimants (out-of-work benefits)
- Not school ready (Year R)
- Do not achieve 5+ good GCSEs
- No qualifications
- Education, Training & Skills (IMD domain)
- No car
- Tenure: Social Rented
- Tenure: Private Rented
- Overcrowding
- Shared dwellings
- Transience: Moved in last year
- Single parents
- Distance to nearest GP
- Distance to nearest pharmacy
- Distance to nearest A&E/Urgent Care centre
- Crime rate (per 1,000 population)
- Living environment (IMD domain)
- Deprivation (IMD)

### POPULATION DISTRIBUTION



- High numbers of young adults
- Low numbers of children and teenagers

### KEY FOCUS AREAS:

Improve living environment and good affordable housing



# South Kent Coast CCG - Type 4 Deprived LSOAs



Produced by KPHO (NH), Jan 2016.  
 © Crown Copyright and database right 2016,  
 Ordnance Survey 100019238



# South Kent Coast CCG - Type 4 Deprived LSOAs



Produced by KPHO (NH), Jan 2016.  
 © Crown Copyright and database right 2016,  
 Ordnance Survey 100019238



## GP Practices

### GP Practices Serving Deprived LSOAs: Recorded Disease Prevalence

For the GP practices that serve LSOAs in the most deprived decile, we have analysed the recorded disease prevalence from QOF data (Quality Outcomes Framework). Note that the data shows recorded disease prevalence, and does not account for undiagnosed disease in the community.

- High recorded prevalence of epilepsy and Chronic Kidney Disease in many of these practices.

GP Practice	Asthma	Atrial Fibrillation	Cancer	Coronary Heart Disease	Chronic Kidney Disease	COPD	Diabetes	Heart Failure	Hyper-tension	Stroke & TIA	Mental health	Dementia	Epilepsy	Depression	Learning Disabilities	
G82002	St James' Surgery	5.9	1.5	2.0	2.9	4.9	2.1	6.8	0.4	14.1	1.5	0.7	0.5	1.1	10.4	0.5
G82015	Pencester Surgery	5.9	1.6	2.4	3.2	4.3	1.9	6.7	0.6	13.6	1.9	0.8	0.7	1.1	13.8	0.5
G82086	The New Surgery	6.4	1.7	2.0	3.0	5.5	2.9	6.7	0.4	12.5	1.3	1.0	0.6	1.2	8.1	0.4
G82091	Guildhall Street Surgery	4.9	1.5	2.4	2.9	3.8	1.9	7.4	0.4	12.9	1.8	1.5	0.6	1.0	7.8	0.4
G82117	High Street Surgery	5.4	2.3	2.3	3.6	5.3	1.9	7.2	0.5	15.4	2.1	0.6	1.0	1.2	8.6	0.4
G82128	Peter Street Surgery	5.7	2.1	2.2	3.5	7.1	2.3	7.3	0.7	13.7	2.2	0.9	1.0	1.4	5.0	0.7
G82187	Folkestone East Family Practice	6.4	2.3	2.5	3.9	6.1	3.2	7.6	0.5	16.1	1.6	1.0	0.8	1.1	8.6	0.7
G82211	Aylesham Medical Practice	4.7	1.8	2.8	3.3	7.3	4.4	7.7	0.9	15.0	1.9	0.7	0.7	0.9	6.0	0.5
G82232	Manor Clinic	5.2	1.4	1.8	2.7	4.8	1.6	6.0	0.3	12.5	1.5	1.2	0.5	0.9	5.5	1.1
G82662	Pencester Health	3.2	0.7	1.3	1.8	2.5	1.2	5.2	0.3	8.4	0.9	0.8	0.4	1.1	7.6	1.1
G82729	White Cliffs Medical Centre	5.9	2.1	3.0	3.2	7.6	2.6	6.5	0.6	18.2	1.7	0.9	0.9	0.9	5.1	0.4

Denotes value is in the upper quartile for GP practices in Kent

Denotes value is in the lower quartile for GP practices in Kent

Figures for chronic kidney disease (CKD), epilepsy and depression related to patients aged 18+, figures for diabetes to patients aged 17+. Other measures (including learning disability) related to all ages

Source: HSCIC - Quality and Outcomes Framework (QOF) for April 2014 - March 2015, prepared by KPHO (RK), December 2015



## Data Sources

- 1-6** Age-standardised mortality rates, 2006-2014. Source: PCMD. **2** ICD10: I00-I99. **3** ICD10: J00-J99. **4** ICD10: C00-C97. **5** ICD10: U00-Y99. **6** ICD10: F10, G31.2, G62.1, I42.6, K29.2, K70, K73, K74, K86.0, X45, X65, Y15.
- 7** Emergency admissions, 2012/13-2013/14. Source: SUS.
- 8** % self-reporting day-to-day activities 'limited a lot', 2011. Source: Census .
- 9** Modelled based on smoking prevalence data by Mosaic type. Source: Experian (TGI: 'Heavy', 'Medium' & 'Light' smokers combined).
- 10** Modelled based on % who do not exercise by Mosaic type. Source: Experian (TGI).
- 11-12** % children measured who were obese, 2013/14. Source: NCMP.
- 13** Modelled based on % who claim to eat '5-a-day' fruit and vegetables by Mosaic type. Source: Experian (TGI).
- 14** Modelled mental health prevalence based on GP practice-level data, 2014/15. Source: QOF.
- 15-16** Modelled wellbeing based on ONS Annual Population Survey (APS) data by Acorn type, 2011/12. Source: DCLG. **15** % scoring 0-6 for 'Overall, how satisfied are you with your life nowadays?' **16** % scoring 0-6 for 'Overall, to what extent do you feel the things you do in your life are worthwhile?'
- 17** Modelled based on median household income data by Mosaic type. Source: Experian (ConsumerView).
- 18** % claiming out of work benefits (defined as all those aged 16-64 who are jobseekers, claiming ESA & incapacity benefits, lone parents claiming Income Support and others on income related benefits), February 2015. Source: DWP (from Nomis).
- 19** % Year R pupils not achieving a good level of development, 2015. Source: KCC, MIU.
- 20** % pupils not achieving 5+ A\*-C GCSEs (including English & Maths) at the end of Key Stage 4, 2015. Source: KCC, MIU.
- 21** % with no qualifications (based on persons aged 16+), 2011. Source: Census.
- 22** Education, Training & Skills IMD domain (average score), 2015. Source: DCLG.
- 23** % of households with no car or van, 2011. Source: Census.
- 24** % of households living in social rented accommodation, 2011. Source: Census.
- 25** % of households living in private rented accommodation, 2011. Source: Census.
- 26** % of households with an occupancy rating of -2 (i.e. with 2 too few rooms), 2011. Source: Census.
- 27** % of households with accommodation type 'shared dwellings', 2011. Source: Census.
- 28** % of households not living at the same address a year ago, 2011. Source: Census. Please note that OAs E00124937 & E00166800 have been removed from this analysis due to the undue influence of Eastchurch prison on levels of transience.
- 29** % of households with no adults or one adult and one or more children, 2011. Source: Census.
- 30-32** Distance to nearest GP/pharmacy/A&E or Urgent Care centre (in miles, as the crow flies from population weighted centroid of LSOA), 2015. Source: KCC Business Intelligence.
- 33** Crime rate (recorded crime per 1,000 population), Oct 2013 - Sept 2015. Source: data.police.uk.
- 34** Living Environment IMD domain (average score), 2015. Source: DCLG.
- 35** Index of Multiple Deprivation (IMD) (average score), 2015. Source: DCLG.